



NATIONAL SENIOR CERTIFICATE EXAMINATION
NOVEMBER 2009

ENGLISH HOME LANGUAGE: PAPER II

Time: 3 hours

100 marks

PLEASE READ THE FOLLOWING INSTRUCTIONS CAREFULLY

1. This paper consists of 5 pages.
 2. Questions must be answered in both sections. In Section A you must answer the Shakespeare question and one question on the novel.
 3. Begin each question on a new page. Do not copy down headings for your answers. Copy down only the question numbers, making sure they are accurate. You may answer the questions in whatever order you wish, but number answers exactly as the questions are numbered.
 4. Do not hesitate to give your own judgements. Attempt to create space in which your own voice can be evident. The examiners will judge your answers on your understanding of and insight into given texts and will also assess the competence with which your answers are expressed.
 5. Be guided by the number of marks allocated to each question. Aim at thoughtful answers that give relevant information and are well-substantiated.
 6. It is in your own interests to write legibly and to present your work neatly.
-

SECTION A LITERATURE

SHAKESPEARE: OTHELLO

QUESTION 1

Write a mini-essay in response to the following question. The length of your response should be 350 – 400 words. Remember that your response must be preceded by a **one page plan** of what you intend to argue in your essay. The plan must provide an indication of how you will structure your essay. **Please provide a word count at the end of the essay.**

Your knowledge of *Othello* and your ability to plan, structure and substantiate your stance – including the use of quotations – will be assessed.

Definition of **Xenophobia**: 'an unreasonable hatred or fear of foreigners or strangers, or of that which is foreign or strange'. (Merriam Webster dictionary)



Definition of **Malice**: 'desire to harm or cause difficulty to others; ill-will, harmful intent'. (Merriam Webster dictionary)



Closely consider Iago's motives throughout the play. Evaluate whether it is a case of xenophobia or a case of malice that could be considered to play a more significant role in his actions.

(30)

30 marks

NOVELS***SATURDAY* or *THINGS FALL APART***

Write a literary essay on ONE of the following topics. Your essay should be approximately 600 words in length. Close and relevant reference to the texts in question is essential.

QUESTION 2 *SATURDAY*

- 2.1 "*Saturday* is the future already here. On its pages, art, poetry and science dance together in perfect time." (Jesse Lee Kervechal)

Refer to the above quotation. In a carefully constructed argument, show to what extent you believe Henry Perowne manages the intersection of 'art, poetry and science'.

(30)

OR

- 2.2 It has been argued that an important purpose of literature is that it helps people to discover themselves. It gives readers insight into their feelings, thoughts, pasts, futures and values. In a way, it is the oldest form of psychology.

Decide, through careful consideration of the concerns of the novel, whether *Saturday* functioned effectively as a psychologist, giving readers insights that were previously unavailable or hidden.

(30)

OR**QUESTION 3 *THINGS FALL APART***

- 3.1 During the 2008 Grahamstown National Arts Festival, a line from the Rhodes University production of **Hamlet Reimagined** stated that, 'something is rotten in the state of hope'.

Discuss to what extent you believe this line could apply to Chinua Achebe's purpose in *Things Fall Apart*?

(30)

OR

- 3.2 It has been argued that an important purpose of literature is that it helps people to discover themselves. It gives readers insight into their feelings, thoughts, pasts, futures and values. In a way, it is the oldest form of psychology.

Decide, through careful consideration of the concerns of the novel, whether *Things Fall Apart* functioned effectively as a psychologist, giving readers insights that were previously unavailable or hidden.

(30)

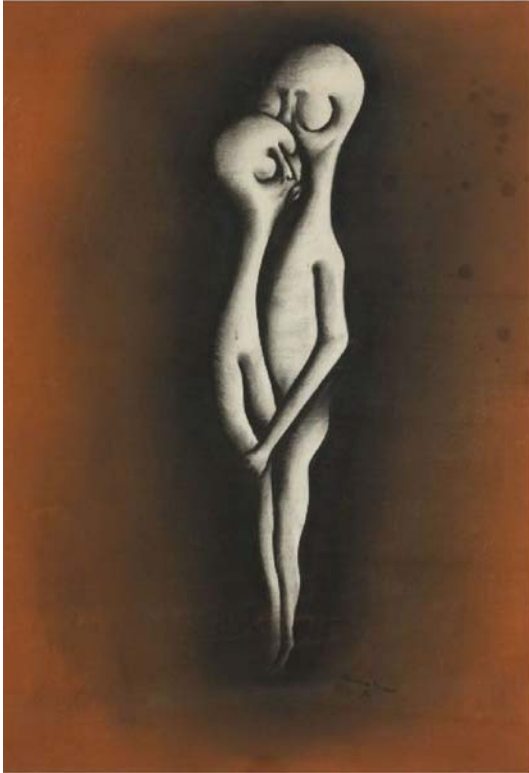
30 marks

SECTION B TRANSACTIONAL WRITING: SHORT PIECES

QUESTION 4

Answer TWO of the following questions. The body of your response should be approximately 250 – 300 words in length. Remember to pay attention to the **register** and **purpose** of your text.

4.1



Thami Mnyele is an artist whose works were recently exhibited at a Johannesburg Art Gallery. Above are two of his works.

Write a dialogue between Mnyele and an imagined art gallery visitor. The dialogue must begin with the visitor exclaiming, "Mr Mnyele, what on earth do you mean by these strange paintings?"

(20)

4.2 The job of a forensic psychologist is to evaluate carefully the psychology and motives behind actions that are undertaken by individuals. Imagine that you are the forensic psychologist who has been assigned to judge the nature of the psychology behind Emilia's behaviour in *Othello*.

Write the report for your supervisor in which you outline your findings.

(20)

- 4.3 Refer to the flyer below. Send an email to activeleader@activist.co.za in which you argue whether this initiative will be successful amongst South African adolescents (especially given the currently complex political climate and high levels of apathy and political disenchantment amongst teenagers).

ACTIVIST
ARMCHAIR ACTIVISM & THE RISE OF THE ONLINE CITIZEN

When an elected official receives a hundred letters they take notice. When a company director gets a thousand e-mails direct to their inbox, it makes things happen.

Whether you send e-mail to a decision-maker, vote in an election, clean up your neighbourhood, shop smart, or talk to your friends and family about the environment, you are making a difference.

Activist is a non-profit organisation which aims to make the process of participation even more efficient by enabling you to support multiple initiatives with a single click.

www.activist.co.za

protest!
picket!
petition!

Supported by
CONSCIOUS
CONNECTIONS

THE RIGHT TO KNOW

(20)

- 4.4 Extract from news article: *'Seeing the need for greater social cohesion, political conservatives are becoming increasingly forceful in their efforts to encourage a return to traditional values. However, the resurgence of old fashioned views is only encouraging greater skepticism and social division as it threatens to undo the positive social changes of the last few centuries. And as hostility grows between conflicting beliefs, with escalating global conflict and increased military spending, the conservative vision is a recipe for disaster.'*

Write a letter to the editor of your local newspaper in which you respond to the above.

(20)

40 marks

Total: 100 marks